



Visit Ely

Ely's Tourist Information Centre

THE GUIDE TO ELY AND SURROUNDING AREA 2024



CELEBRATING 50 YEARS AS A CITY

www.visitely.org.uk



Ely's Riverside Events Venue



**WE CATER FOR WEDDINGS, PARTIES, CONFERENCES,
LIVE MUSIC, THEATRE, CINEMA, AND MUCH MORE**

The Maltings, alongside the Cathedral is arguably one of the City's distinguishing landmarks, set in the beautiful surroundings of Ely Riverside, with stunning views over the River Ouse and Marina.

The Maltings, Ship Lane, Ely, Cambs CB7 4BB
Tel: 01353 662633 • maltings@cityofelycouncil.org.uk

www.themaltings.org.uk



It is no understatement to say that 2023 has been a successful year for Ely. We have seen numbers of overseas and domestic visitors rise to levels we'd only aimed for by 2025 and Group Tour pre-bookings for the coming year are the highest we've ever seen. Proof that Ely really is one of the finest destinations in the world!

It's been a year of double celebrations with the 1350th Anniversary of the founding of what would become Ely Cathedral and the Coronation of King Charles III and Queen Camilla. Visit Ely was honoured to be able to commemorate those momentous occasions with events such as our 'Coronation' themed Eel Festival Weekend.

2023 also saw the launch of our Visit Ely App and Digital Signposts, an incredible project that has been several years in the making. This has allowed us to share our city and highlight our message "Ely is where medieval meets modern" via smartphones and tablets.

2024 is another very important year for Ely as it marks the 50th anniversary of being awarded "City Status" by Queen Elizabeth II. The anniversary will be celebrated with a series of events throughout the year. We also celebrate 50 years of the City of Ely Council. Here's a few words from the Mayor of Ely, The Right Worshipful Cllr Chris Phillips

"Ely has been known as a city for centuries, but it was only in 1974 that a Royal Charter affirmed its status and at the same time granted its Mayor the title of 'Right Worshipful'. We delight in these wonderfully quirky reminders of our past but more importantly, as we celebrate a golden '50', we are also conscious that we are linked to a much longer history and to those thousands of pilgrims and visitors whose feet have beaten a path, through the centuries, to our door right into our own day. One thing remains constant, and that is our welcome."

To that end, join us in celebrating half a century, it certainly is going to be golden.

With very best wishes

Anna Bennett

Tourism and Town Centre Manager

✉@visitely [f/visitely](https://www.facebook.com/visitely) [ig/visit_ely](https://www.instagram.com/visit_ely) [tiktok/@visitingely](https://www.tiktok.com/@visitingely)

© Visit Ely 2024. Produced by Visit Ely. We have tried to make this guide as accurate and user-friendly as possible. Visit Ely does not accept responsibility for errors and omissions, nor does inclusion in the guide imply recommendation. All details correct at time of print – January 2024

Design and production: Cambridge Marketing Limited
www.cambridgemarketing.co.uk

Contents

- 5 Ely Cathedral
- 7 Ely Riverside
- 9 Places to go, things to see
- 14 A Feast of Food
- 20 52 Things to do in Ely
- 22 Events for your diary
- 30 Shopping
- 34 Tourist Information Centre
- 35 Guided Tours and Walks
- 38 Arts & Entertainment
- 45 East of England
- 46 Always accommodating
- 51 Looking forward to... 2024



Our cover artist 2024 **Sarah Lown**

Sarah is a textile designer and illustrator living in Cambridgeshire.

"Having worked in the creative industry for many years, I decided to start my small business in 2020. Nature has always been my biggest inspiration and I would say my style is very maximalist.

I've always had a huge passion for art and started drawing/painting at a very young age.

I now sell my illustrations and handmade products online and at Ely market every Saturday.

The local community and beyond have been so supportive and encouraging in my journey."

www.MysticalSkyStudio.com



www.visitely.org.uk



ELY
CATHEDRAL

Come and experience one of the wonders of the Medieval World

- Guided Tower Tours with magnificent views
- Restaurant, Café & Gift Shops
- Stained Glass Museum
- Monastic Buildings & Gardens
- Specialist Exhibitions & Events
- Major Film & TV Location (The King's Speech, The Crown)
- Groups & Specialist Tours Welcome

Open Daily
01353 667735
www.elycathedral.org

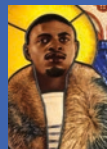
Explore the landscape of the fens and the lives of the people who lived here



ELY MUSEUM
www.elymuseum.org.uk
(01353 66655)



THE STAINED
GLASS MUSEUM



A national collection of stained glass, from medieval to modern

Located in the upper level of Ely Cathedral*

www.stainedglassmuseum.com

South Triforium, Ely Cathedral, CB7 4DL

*Access via steps only. Separate admission charges apply to Ely Cathedral

Registered charity no. 1169842





ELY CATHEDRAL

Ely Cathedral is highly regarded by historians and architects from all over the world for its beauty and size, and is widely acknowledged as 'one of the wonders of the Medieval world'.

The present building dates from 1081 and is a remarkable example of both Romanesque and Norman architecture. In addition to its unique Octagon Tower and magnificent Lady Chapel, Ely has the third longest nave of any UK Cathedral.

In 2024 visitors can benefit from a new Multi Media Guide which offers a choice a three audio visual tours, available in six languages, in addition to BSL and an audio descriptive format. A range of face to face tours include the opportunity to climb one of Ely's magnificent towers as well as guided tours on specialist areas from Life as a Medieval Monk to the Victorian Restoration.

For those fascinated by the movies, Ely Cathedral has gained global recognition a prominent film location for numerous high profile productions including *Elizabeth: The Golden Age*, *Macbeth*, *The King's Speech*, *The Crown* and, most recently, *Maestro*.



> For full details and to book tickets please visit www.elycathedral.org



www.visitely.org.uk



Stained Glass Museum

The Stained Glass Museum boasts a nationally-significant collection of stained glass. The museum's colourful gallery in the triforium of Ely Cathedral tells the story of stained glass through the ages, with examples from both secular and sacred buildings across the UK and Europe. Displayed at eye-level, visitors can experience this art form at close quarters. Events and workshops are held throughout the year.

Oliver Cromwell's House

Oliver Cromwell is perhaps Ely's best known former resident and his house on St Mary's Street pays homage to his influence and gives a fascinating insight into life in the 17th century. The House, which also serves as the City's Tourist Information Centre, provides a fascinating snapshot of how Cromwell and his family would have lived during their ten years in Ely from 1636.

2024 will bring an exciting year for Oliver Cromwell's House, with the loan of artefacts from the Cromwell Museum on display, and exciting educational offerings for schools, colleges and universities, and brand new tours both throughout the house and in the City. This award winning historical house is a must see attraction.



The Ely Ribe Tapestry

The City of Ely has been twinned with Denmark's oldest town – Ribe in Jutland – since 1956. This relationship was marked by the commissioning of a special tapestry to celebrate 50 years of twinning and the strong link with Denmark and Danish people.

The stunning tapestry was created by Lise Martinussen and illustrates the features of the two towns that regular visitors would recognise. It is on permanent display at the Maltings.

> www.elyribe-tapestry.co.uk



Ely Riverside

The long stretch of the Great Ouse runs along the southern edge of Ely and is a natural magnet for a gentle stroll, al fresco dining, taking in the wildlife and generally relaxing.

As you meander down Forehill, away from the city, you will discover Ely's finest Waterside Antiques, literally floors of nostalgia, and collectibles. Right next door, you can stop at the award winning Peacocks Tearoom, which is also a B&B with fabulous riverside views. Walk along the river path, past many other eateries and an opportunity to take a cruise on the Liberty Belle with Captain Bob. One of Ely's finest open spaces is also riverside facing, and that is Jubilee Gardens complete with playpark. A great place to relax, bring a picnic and watch the world go by.



Photo Credit: Veronica in the Fens. An established local photographer, who you'll often see on Ely Markets. If you like the photo above, please do check out her website www.veronicainthefens.com

Ely Museum

Visit the award-winning Ely Museum and explore the interactive galleries. Enjoy an exciting programme of events for all ages.

Discover the story of the unique fenland landscape and of the people who shaped it from prehistory to the modern day.

> Find out more on our website:
www.elymuseum.org.uk



www.visitely.org.uk



Dojima Sake Brewery

Dojima Sake Brewery is open for tours and guided tastings by appointment.

The first of its kind to be built in the UK, this stunning brewery is set in the picturesque grounds of the Fordham Abbey estate. Come for a truly unique experience which combines English heritage with Japanese culture and delicious, handcrafted sake.

The Georgian house, a barn style event hall are available for functions and conferences. Japanese cultural events and fine dining events are planned throughout the year. The tranquil Japanese garden with a shrine and the kitchen garden are open to the public several times a year.

*Join a brewery tour
to find out about the
exclusive Dojima Sake
Members Club!*

Sake enquiries, brewery tour bookings:

www.dojimabrewery.co.uk enquiries@dojimabrewery.co.uk

Event, functions, garden enquiries:

www.fordhamabbey.co.uk office@fordhamabbey.co.uk

Dojima Sake Brewery, Fordham Abbey, Cambridgeshire CB7 5LL



@DojimaSake



@dojimasake



@fordhamabbeyestates

Places to go, things to see

Cambridge – the world famous academic centre

A twenty minute train journey from Ely, the City of Cambridge is world renowned, attracting visitors from around the globe. With its stunning architecture and majestic college buildings, the University is a central part of Cambridge history. Be inspired by the wealth of museums and art galleries or explore the passageways that today host an array of independent shops blended with all the high street brands.

Enjoy some culture by taking in a theatre production, some live music or simply revel in the atmosphere of one of the many restaurants, cafés and bars.

Wicken Fen

Enjoy a walk around one of Europe's most important wetlands – home to Konik ponies, cuckoos, marsh harriers and booming bitterns. See what wildlife you can spot from the hides and treat yourself to something from the Docky Hut Café. There are activities, trails, guided walks, and workshops throughout the year as well as cycle hire and boat trips from March to October.

Burwell Museum

If life in the Fens captures your imagination, a visit to Burwell Museum is essential. Discover how life as a farmer, a blacksmith, a soldier or a housewife was in days gone by, and see how they struggled or prospered in this unique part of the world.

Prickwillow Engine Museum

Packed with a huge collection of historic engines, pumps and related memorabilia reflecting the exceptional engineering history of the area. It tells the story of the Drainage of the Fens and if you visit on a 'Run Day' you can really appreciate the challenges that faced the Fenlanders in their quest to develop this fertile corner of England.

The Cambridge Aqua Park

The park, south of Ely off the A10, offers families the best possible reason to get wet! It features an incredible inflatable obstacle course where you can jump into a wetsuit and lifejacket and burn off some energy. Close by is Hannams Wake Hub where you can try your hand at wakeboarding, with coaching from licenced operators if you need it.

The Wildfowl & Wetland Trust's Centre at Welney

This is one of Britain's most celebrated sites. During the winter enjoy commentated wild swan feeds from the comfortable hide, and surround yourself with the sights and sounds of winter wildlife along footpaths, trails and from further hides. Families can pick up an explorer backpack and learn more about the seasonal wildlife, enjoy pond dipping in summer or bird watching in winter.

Explore the furthest reaches of the reserve in summer to enjoy wildflowers, dragonflies and warblers. To book tickets and for full information on what to see and when to see it visit www.wwt.org.uk/wetland-centres/welney/

> For an engaging look at the past and present of the Fens and how best to enjoy this unique and wonderful area, please visit: www.fascinatingfens.com






Burwell Museum & Windmill



- Tour the windmill
- Vintage vehicles
- Explore fen-edge life
- Special event days
- Local history research room
- Refreshments and shop

Burwell Museum
Mill Close, Burwell CB25 0HL
museum@burwellmuseum.org.uk
www.burwellmuseum.org.uk

   @burwellmuseum

**PLEASE CHECK WEBSITE FOR OPENING TIMES
AND SPECIAL EVENT INFORMATION**



WELNEY WETLAND CENTRE

Plan your visit and book online
www.wwt.org.uk/Welney



Hundred Foot Bank, Welney, Nr. Wisbech PE14 9TN
© WWT 2023. Registered charity no. 1030884 England and Wales, SC039410 Scotland. © WWT images.

FUN FOR ALL THE FAMILY



**CAMBRIDGE
AQUA PARK**

VISIT
WWW.CAMBRIDGEAQUAPARK.COM
FOR FAQ'S AND TO BOOK YOUR SESSION

WE ARE LOCATED JUST OFF THE A10, STRETHAM, NR ELY



HANNAM'S WAKE HUB

**CAMBRIDGESHIRE'S PREMIER
WAKEBOARD CENTRE**

*Located just off the A10,
Stretham, near Ely.*



- TRY SOMETHING NEW, IMPROVE YOUR SKILLS OR JUST COME TO PLAY!
- COACHING AND EQUIPMENT PROVIDED
- BRING YOUR FRIENDS OR FAMILY, OR JUST YOURSELF AND A TOWEL!
- KNEEBOARDING AND WAKEBOARDING, FUN FOR ALL AGES FROM 6+



WWW.HANNAMSWAKEHUB.COM



[/HWHWAKEPARK](https://www.facebook.com/HWHWAKEPARK)



[@HANNAMSWAKEHUB](https://www.instagram.com/HANNAMSWAKEHUB)

The Boat Haven

BOAT HIRE, ACCOMMODATION, MOORING, BOAT SALES AND MAINTENANCE

Hire a day boat and enjoy the majestic views of Ely Cathedral from the River Great Ouse. Immerse yourself in nature exploring the wonderful Rivers Lark, Little Ouse and Wissey. Strike out further to Cambridge or St Ives on longer boating breaks.

07879 641680

dawn.theboathaven@gmail.com

theboathaven.co.uk

Babylon ARTS

Visit us on Ely's Waterside. Our gallery features a rolling programme of exhibitions, and our shop stocks affordable arts and crafts from local and regional artists.



See our website for our full programme of cinema and events.

www.babylonarts.org.uk

Waterside • Ely • CB7 4AU

Tues - Sun, 12-4pm • Free Entry

LIBERTY BELLE

~ *Ely river cruises* ~

Captain Bob Todd ~ 07927 390380



Daily 30 minute trips cruising Ely's historic waterfront hearing Ely's historical and sometimes quirky past with regular departures from 11am.

Private cruises, Fish and Chip supper cruises and extended trips available for groups. *Booking for these essential.*



@libertyBelleEly



@libertybellecruises



tripadvisor®



www.visitely.org.uk



A Feast of Food

Great food is a key part of life in Ely! Whatever you fancy, be it traditional English pub grub, Italian, American, Asian, you'll be sure to find something to tempt your tastebuds!

From traditional to gastro, to fine dining set menus, there's certainly a great choice.

Local favourites include Poets House, The Old Fire Engine House and Eat Thai – all on St Mary's Street. Just up from Poets House you'll find the Bake Shop and General Store, which serves the most delicious pastries, coffees, fabulous wines and more and a cute little seated area out the back!

Tucked around the corner in Silver Street you'll discover The Prince Albert – a traditional mid-19th Century Inn complete with re-landscaped garden area and garden room. Nostalgia certainly springs to mind when you pop into Prospect's Trust on Lynn Road. Here you'll find a wonderful variety of produce from their 18-acre organic farm a few miles from Ely. There's a wonderful outside canopy area with overhead sparkly fairy lights where you can savour a tasty vegan sausage roll and hot chocolate.

Maybe you fancy trying the food at The Lamb, one of Ely's oldest coaching Inns. Situated in the town centre this 15th Century building, steeped in history, offers overnight accommodation, breakfast, lunch, and dinner. You can also wander down Ely's High Street to our very own Chartered Market where there's a great selection of food trucks and during the summer months, check out

Foodie Fridays, they are fantastic!

Surrounding Ely Market Square, you'll discover an abundance of amazing eateries to choose from. Ely Grazing is not to missed. Pop in and treat yourself to a 'Cromwell' toastie and a hot chocolate, or try a 'grazing' cone, a takeaway option packed full of artisan cheeses, meats, crackers, olives and more, lovely to snack on whilst browsing the market stalls. Just across the square, you have Market Kitchen offering takeaway and outside catering facilities.

Towards Ely riverside you'll come to Three Cups Walk, here you'll find 3at3, a place to grab a locally brewed beer, and just opposite you'll find Sophie's. This glorious café, owned by Sophie herself, started out on the Market, a true success story! Here you'll find a fine selection of vegan cakes and goodies.

Forehill offers some fine eateries and one of Ely's oldest buildings, The Royal Standard. Great for just a pint, or a three-course sumptuous lunch or dinner. If you are planning an overnight stay, check out one of their traditional styled rooms and full English! Further down you can treat



yourself to one
of Ely's finest
curries, at Le Spice.
Amin and his team
literally welcome their
diners with open arms.

Tuesday evenings are well worth
a visit here, it's banquet night so check
out their website. Ely's Turkish is just a few
doors down and is always busy, so booking is
highly recommended.

We also have a delightful new coffee shop
café called the Tamarin Bay Coffee House.
They offer a wonderful selection of brunches,
lunches, cakes, coffees and more. It's a great
place to switch off and chill with friends,
maybe work remotely. On the opposite
side, just down from the Drayman Brewery,
we have the Turkish restaurant. This is an
extremely popular eatery, so booking in
advance is recommended.

As you wander down Forehill, towards Ely's
riverside, you'll come to Peacocks Tea Room
and B&B. This fine, award winning quirky
licensed tearoom is one not to miss. They also
offer bistro evenings and rooms above the tea
rooms should you wish to stay over, with fine
views of Ely Riverside. Walking further along
the Riverside, you'll pass The Maltings, literally
the best event venue in town where you can
catch a band, a play, and the annual Ely
Panto which is performed here and attracts
over 10,000 visitors during the season. Just
next door is RBK, a wonderful restaurant bar
where you can sit outside under the willow
trees and watch the riverside activity. It's also
a fabulous place to eat, so check out their
carvery, open every day.

One of the oldest pubs in Ely greets you as
you make your way towards the Railway
Station, and that's The Cutter Inn. The Cutter
is a very popular pub, with outside seating
and perfect for that summer afternoon chill
time. There are private dining areas including
the new 'Sid Merry' lounge who was Ely's last



Eel Catcher. If South American food tickles
your tastebuds, try Urban Fresh, tucked
away in the corner with outside dining
area and again, great cocktails, spicy grills
and mouth-watering steaks.

Head out into nearby villages and you'll
find more wonderful restaurants with
extensive gourmet menus. There's a whole
host of traditional pubs where you relax
in the most picturesque atmosphere. A
notable few to try are The Maid's Head
at Wicken, The Merry Monk at Isleham
and The White Pheasant in Fordham.
Just outside Ely, on the Stuntney Estate,
you'll find Ben's Yard restaurant and café,
open 7 days a week and comes highly
recommended.

A real treat is The Old Hall Ely. Situated
at the end of a magnificent tree-lined
drive, this stunning building is a heritage
landmark in Ely and a house once
occupied by Oliver Cromwell's mother and
family. Now a country retreat, wedding
venue with luxurious rooms and brand-
new Orangery, just to pop over and treat
yourself to a drink in the garden is an
experience not to be missed.

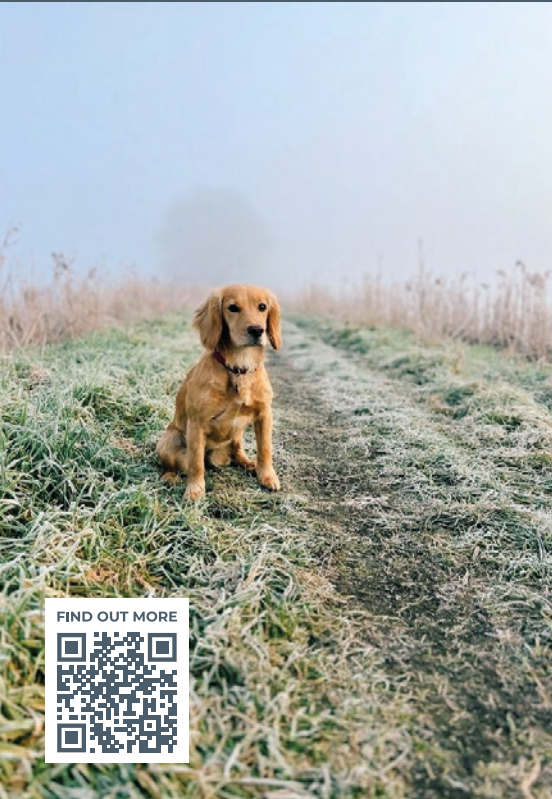
**We think Ely and the surrounding area is truly unbeatable when choosing
where to dine, it's that good you'll have to plan a return to try them all.
A good tip is to make sure you book during the summer months.**



BEN'S YARD



An out of town collection of independent shops, with wellness, hair and beauty, home interiors, food, fashion and giftware, a cafe and a restaurant.



2024 EVENTS INCLUDE...

Dog Shows
Easter Trails
Up-cycle and Recycle Fairs
Family Festivals
Food Fairs
Wellness Fair
Christmas Fair
Outdoor Cinemas
Christmas Experiences
And more...



FIND OUT MORE



Ben's Yard, Stuntney Estate, Ely, Cambridgeshire, CB7 5TR
@bensyardely | www.bensyard.co.uk

THE OLD *Ely* HALL

Your Exclusive Use Wedding Venue | Luxury Hotel | Fine Dining Restaurant



Afternoon Tea | Breakfast | Sunday Lunch
Dinner | Charcuterie Boards | Private Parties
Special Events | Weddings | Overnight Stays
Corporate Spaces | Festive Parties | NYE Party

01353 663275 
Soham Road, Ely, Cambs CB7 5TR 
events@theoldhallely.co.uk 
www.theoldhallely.co.uk 

Indulge in luxury

Poets House is a charming hotel in the heart of Ely, perfect for dining, leisure breaks, romantic escapes, weddings, celebrations and events.



Poets House, St Mary's Street, Ely, Cambridgeshire CB7 4EY

01353 887777 | www.poetshouse.co.uk



The Fenland Gîte ELY



Self catering accommodation with easy walk to town centre and Cathedral. Delightful, compact well appointed modern self-contained ground floor flat. One double bedroom with Freeview TV, hall, kitchen, bathroom (electric shower over bath) and lounge/diner with Smart TV. Free WIFI. Private patio with furniture. On-site parking. All linen, towels, gas and electricity included.

Sorry, no pets. No smoking.

Sleeps 2. 1 Double

£375.00/week (Saturday/Saturday)

Alan Stevens, 83a Lynn Road, Ely, Cambs CB6 1DD

T 01353 667193 M 07923 471107 E bookings@fenlandgite.com

www.fenlandgite.com

WILLOW COTTAGE

A beautifully presented, two bedroomed detached cottage which sleeps four, within walking distance of all amenities. Private off road parking for two small or one large car.



The accommodation comprises a well-equipped kitchen, including dishwasher, washing machine and Nespresso coffee maker, charming sitting room, separate dining room and two bedrooms, one double and one with zip and link beds which can be set as two small singles or one king size. Recently refurbished shower room with walk in shower. Delightful courtyard garden which has been recently renovated to create the perfect space for outdoor dining. Smart TV and free Wi-Fi included. Range of books, DVDs and games. Pets considered.

For further information and availability:

Email: willowcottageely@gmail.com


www.willowcottageely.com



www.visitely.org.uk

52 Things to do in Ely

- 1 Marvel at the wonderful colours of the Ely Ribe Tapestry at **The Maltings Ely**
- 2 Admire the stunning riverside views from **Riverside Bar and Kitchen**
- 3 Enjoy afternoon tea at **Peacocks**, award winning tearoom/restaurant and B&B
- 4 Taste some home-made cakes from the **Market Kitchen Café**, Market Square
- 5 A lifestyle experience all under one roof – enjoy **Ben's Yard**, Stuntney Estate
- 6 Explore Ely's **Pagan and Alternative Fayres** for something magical
- 7 Indulge in afternoon tea at **The Orangery** at **The Old Hall Ely**
- 8 Take on a challenge – Ely's Escape Room puzzles at **Oliver Cromwell's House**
- 9 Have a fun day out for all the family at **Cambridge Aqua Park**
- 11 Take a train! Visit Cambridge, Norwich or even London! We are so well connected.
- 12 Hop in the car for a short journey to the coastlines of Norfolk and Suffolk
- 13 Discover some fabulous, traditional English dishes at **The Old Fire Engine House**
- 14 Try some fudge from our very own **Ely Fudge Company**
- 15 Head over to Cambridge and enjoy a punt **Rutherford's**
(discount available when you show the ad in this guide)
- 16 Treat yourself to an Ely souvenir from our **gift shop** at the **Tourist Information Centre** at Oliver Cromwell's House
- 17 Discover some unique and special gifts from **The Eel Catcher's Daughter** and **Cattywampus**
- 18 Unearth pure nostalgia and gaze at some wonderful art at **Cloisters Antiques**
- 19 Enjoy the arts fair at the Maltings, by **Art Unequalled**
- 20 Be amazed by the talent on display at the **Babylon Art Gallery** – Ely Riverside
- 21 Get a taste for some **Turkish cuisine**, Forehill Ely
- 22 Take advantage of the sumptuous Indian Banquet nights from **Le Spice**, Forehill
- 23 Enjoy traditional Thai Food at **Eat Thai**, St Mary's Street
- 24 Update your home with décor and furniture from **Ely Interiors**
- 25 Book a **Murder Mystery evening** at Oliver Cromwell's House (from Feb 2024)
- 26 Treat yourself to lunch, or a grazing board al fresco at **Ely Grazing**

- 
- 27 Support independent cinema screenings from **Babylon Arts at The Maltings Ely**
 - 28 Feed the swans or dissect an owl pellet at **Welney Wetland Trust**
 - 29 Wonder at the **Ship of the Fens – Ely Cathedral**
 - 30 Discover Ely's own independent department store – **Cutlacks Forehill**
 - 31 View the most incredible national collection of stained glass at **The Stained Glass Museum**
 - 32 Do not leave Ely without taking in the Panto and the outdoor summer theatre productions by **KD Theatre!**
 - 33 Cruise along the River Ouse with Captain Bob aboard the **Liberty Belle**
 - 34 Take a trip to see the windmill at **Burwell Museum**
 - 35 Stroll through the region's finest countryside at **Wicken Fen National Trust**
 - 36 Find a sunny spot to enjoy pizza and a pint at **The Prince Albert** on Silver Street
 - 37 Try a Sunday Roast at **The Cutter Inn** and enjoy the Riverside views
 - 38 Sip a cocktail and enjoy some of the best steaks in Ely at **Urban Fresh**
 - 39 Treat a loved one or yourself to a bouquet from the **Wild Clover Flower Company**, Forehill
 - 40 Take a tour of the beautifully renovated **Ely Museum** and browse their incredible collection of artefacts!
 - 41 Take a **guided tour** with the city's finest guides from Visit Ely
 - 42 Grab a ticket, a deckchair and chill at the **Ely Folk Festival** – July 2024
 - 43 Take in a romantic meal and a soak in a copper bath at the luxurious **Poets House**, Ely
 - 44 Relax in a 15th Century Coaching Inn known as **The Lamb**, Ely
 - 45 Check out the **fantastic Foodie Fridays** in the summer – Ely Markets
 - 46 Stroll round the **Charter Markets** every Thursday and Saturday
 - 47 Be brave and take in a **ghost tour** – seasonal from October
 - 48 Attend the one and only, unique, **Ely Eel Festival** – May 4th 2024
 - 49 Enjoy a **Food, Drink and Craft festival** – May 5th and 6th 2024
 - 50 Celebrate **Ely Arts Festival** every June
 - 51 Try your luck at the longest peel competition – **Ely's Apple Fayre** – October 2024
 - 52 Enjoy **Heritage Open Days** – free, every September



Events for your diary

4th May
Ely's Eel Day

5th and 6th May
Ely's Food, Drink
and Craft Festival

15th to 29th June
Ely Arts Festival

22nd June
Armed Forces Day

12th to 14th July
Ely Folk Festival

27th July
The Green Fair

6th to 15th September
Heritage Open Days

12th October
Apple and Harvest Fayre

2nd November
Ely Fireworks

**13th December
to 5th January**
KD Pantomime

Keep up to date with more
information by checking our website
www.visitely.org.uk

** all details are correct at time of printing,
but dates could be subject to change **



- Large Diesel Engines
- History of Drainage
- Fun Family Activities
- Themed Event Days
- Group bookings welcome
- Tea shop and Gift Shop



Main Street, Prickwillow, CB7 4UN
Tel: 01353 720737 or 0780 105 0267
email: prickwillowmuseumadm1@outlook.com

www.prickwillowmuseum.com

Find us on facebook  @museumatprickwillow

**Facilities for exhibitions, conferences,
meetings and private functions**

Rutherford's



Punting in Cambridge
rutherfordspunting.com

SAVE 10% Code: VisitEly24

*Offer on private & shared tours 2024, subject to our terms. Not for use with other offers.



www.visitely.org.uk

le'spice

Fine **Indian** Dining

Welcome to Le Spice. A fine Indian dining experience, based in the heart of Ely. We pride ourselves on first class customer service, you will always be welcomed with open arms. Our authentic, Indian cuisine, prepared by our finest chefs is consistently fresh, healthy and innovative and we use the finest ingredients. Dining at Le Spice is a memorable experience, one you will never forget.

“ Amin and his team at Le Spice provide a first class service, every time we visit ”

Ely Resident

OUR OPENING HOURS

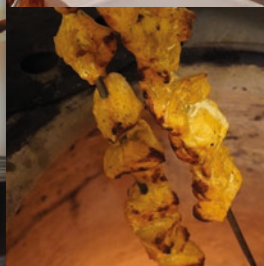
Sunday to Thursday: Midday to 2pm and 5pm to 11pm

Friday to Saturday: Midday to 2pm and 5pm to 11.30pm

We are open 7 days a week including Bank Holiday

26 Fore Hill, Ely • Tel: 01353 644299

www.lespiceely.co.uk



Visit the Tourist Information Centre

A warm welcome awaits you from our
friendly and knowledgeable team,
based in the historic setting of
Oliver Cromwell's House
on St Mary's Street, Ely.

1st April to 31st October

10am– 5pm, daily including
Saturday, Sunday and Bank Holidays

1st November to 31st March

11am– 4pm daily

Closed: Christmas Day, Boxing Day
and New Year's Day

29 St Mary's Street, Ely, Cambridgeshire CB7 4HF

Tel: 01353 662062 **E-mail:** info@visitely.org.uk



www.visitely.org.uk

Ely Riverside

RESTAURANT QUARTER

Beautiful surroundings in the heart of Cambridgeshire

Three family owned restaurants all perfectly positioned on the
stunning River Great Ouse in Ely

the CUTTER INN ELY



the CUTTER INN ELY

Steeped in history The Cutter Inn boasts prime location on Ely's fabulous riverfront. Our glorious wrap around balcony provides ample places to sit and take in the truly spectacular views out to the river. Our seasonal menu always hosts a fantastic selection of homemade traditional pub favourites, available in the bar area or in our restaurant. Locally brewed real ales plus a wide selection of draught beers, ciders and wines from around the globe to choose from.

www.thecutterinn.co.uk
42 Annesdale
Ely
CB7 4BN
01353 662 713

RIVERSIDE BAR & KITCHEN



URBAN FRESH



RIVERSIDE BAR & KITCHEN

RBK is the perfect place to enjoy a fabulous early morning breakfast, lunch or dinner all year round with its stunning terrace, with wrap around high glass windows RBK has unrivalled views of the river, inside and out.

The seasonally changing menu offers fresh and inspiring dishes alongside an extensive drinks offering and an expertly crafted cocktail list.

www.rbk-ely.co.uk
Ship Lane
Ely
CB7 4BB
01353 666 669

URBAN FRESH

A vibrant and exciting restaurant where flavours are guaranteed to rock your taste buds.

Urban Fresh offers fantastic quality food inspired by the flavours of South America. Our 35 day dry aged steaks are highly recommended & perfectly cooked by our expert Chefs. Our wine list has been carefully selected to pair & celebrate the best of South America. Enjoy great food & great drinks in our beautifully designed restaurant or on our patio and watch the river flow by.

www.urbanfreshely.uk
5 Annesdale
Ely
CB7 4BN
01353 240 024



Sign up to our loyalty
club for treats &
discounts every month



National
Trust

Wicken Fen

National Nature Reserve

Visit Wicken Fen and enjoy wildlife,
trails and activities for all. Celebrate
our 125th anniversary with us in 2024.

nationaltrust.org.uk/wicken-fen

For everyone, for ever





Twenty Pence Garden Centre

Everything you need all under one roof!

Escape to a world of frozen delights at the **Orchard Ice Cream Parlour**. Dive into a heavenly scoop of Devon ice cream, indulge in a Belgian waffle, with a thick and creamy milkshake. Relax in our outdoor seating area as you savour each delightful bite. It's the perfect spot to enjoy sunny days and create sweet memories with loved ones.



Putt your way to victory at our challenging **9-hole mini golf** course!



FREE Play Area & Pedal Go Kart Track

Experience endless fun at our play area, where kids can unleash their imagination in the castle sand pit and zoom around our thrilling pedal go kart track.



Treating yourself? Or a loved one...

Discover a world of enchanting treasures at our gift department, where you'll find the perfect present for any occasion. And for the little ones, our children's toy department is filled with wonders that will ignite their imagination. Don't forget our fabulous clothing department filled with scarves, dresses, hats, and more!

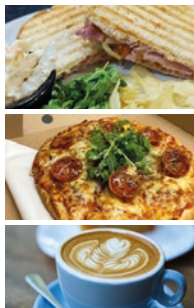


Experience a slice of Italy at

The Orchard

Pizzeria & Patisserie

Delight in our authentic Italian pizzas or a delicious toasted sandwich. And for a moment of pure relaxation, savour the rich aroma and flavours of our premium coffee creations.



Applejacks Restaurant

Indulge in our delectable dish of the day, mouth-watering paninis, heavenly homemade cakes and an array of other irresistible treats that will leave your taste buds longing for more.

Keep up to date by following our social media or visit our website:

www.twentypence.co.uk



Twenty Pence Road, Wilburton, CB6 3RN
Tel: 01353741024

Shop from the comfort of your own home

Exclusive offers, shop hot picks & great gift ideas from our online shop, just a click away!
Everything you need for your home & garden



WEDDINGS • SPECIAL EVENTS • FUNERALS

Say it with flowers

Offering extraordinary flowers and
carefully curated gifts for all occasions

Same day local delivery available on orders

**WILD CLOVER
FLOWER COMPANY**

4b Fore Hill, Ely CB7 4AF

Contact us on 01353 505855 or 01353 968608

Email info@wildcloverflowercompany.co.uk

www.wildcloverflowercompany.co.uk





Shopping

Ely is well known for its delightful independent shops, award winning markets and nationally known chain stores. It really is the ideal place to shop!

The city abounds with small independent shops, particularly on the quaint side streets leading off the main High Street. There are gift shops, craft shops, art galleries and plenty of places to sit, grab a bite to eat and people watch. Be sure to visit (to name a few), The Eel Catcher's Daughter, Oliver Cromwell's House and Cow on the Ice for some really interesting and unique gifts and souvenirs.

Markets have been a part of Ely life for centuries and continue to offer a vast selection today! Choose from household essentials, locally grown fruit and vegetables, flowers and fabulous street food. Ely markets, well known in the region, and renowned to be one of the best in East Anglia, offers opportunity and support to traders showcasing their wares. Many of our independent shop owners started their journey on Ely Market. One to try is Sophie's

– a cute little tea room situated in Three Cups Walk, full of fabulous cakes (and healthy lunches!) You'll also discover arts, crafts, vintage fashion and antiques, the list is endless.

Ely's Farmer's Market offers the very best local and seasonal produce, from rare breed meats, to locally grown vegetables, freshly caught fish, artisan breads, puddings and pies. During the summer months enjoy 'Foodie Fridays' where you can enjoy street food from an eclectic selection of mouth watering delights, cocktails beers and wine and best of all, deck chairs to sit and chat with friends and enjoy the entertainment.

Overall, Ely has everything to offer from a shopping perspective and you won't be disappointed. Keep an eye on the Visit Ely and Ely Markets website for information regarding special events throughout the year.



For groups visiting by coach, drop off the gallery or Oliver Cromwell House/parking postcode CB6 2FE





Ely Markets

2024

January

S	M	T	W	T	F	S
	1	2	3	4	5	6
7	8	9	10	11	12	13
14	15	16	17	18	19	20
21	22	23	24	25	26	27
28	29	30	31			

February

S	M	T	W	T	F	S
				1	2	3
4	5	6	7	8	9	10
11	12	13	14	15	16	17
18	19	20	21	22	23	24
25	26	27	28	29		

March

S	M	T	W	T	F	S
						1
2	3	4	5	6	7	8
9	10	11	12	13	14	15
16	17	18	19	20	21	22
23	24	25	26	27	28	29
30	31					

April

S	M	T	W	T	F	S
	1	2	3	4	5	6
7	8	9	10	11	12	13
14	15	16	17	18	19	20
21	22	23	24	25	26	27
28	29	30				

May

S	M	T	W	T	F	S
				1	2	3
4	5	6	7	8	9	10
11	12	13	14	15	16	17
18	19	20	21	22	23	24
25	26	27	28	29	30	31

June

S	M	T	W	T	F	S
						1
2	3	4	5	6	7	8
9	10	11	12	13	14	15
16	17	18	19	20	21	22
23	24	25	26	27	28	29
30						

July

S	M	T	W	T	F	S
	1	2	3	4	5	6
7	8	9	10	11	12	13
14	15	16	17	18	19	20
21	22	23	24	25	26	27
28	29	30	31			

August

S	M	T	W	T	F	S
				1	2	3
4	5	6	7	8	9	10
11	12	13	14	15	16	17
18	19	20	21	22	23	24
25	26	27	28	29	30	31

September

S	M	T	W	T	F	S
1	2	3	4	5	6	7
8	9	10	11	12	13	14
15	16	17	18	19	20	21
22	23	24	25	26	27	28
29	30					

October

S	M	T	W	T	F	S
		1	2	3	4	5
6	7	8	9	10	11	12
13	14	15	16	17	18	19
20	21	22	23	24	25	26
27	28	29	30	31		

November

S	M	T	W	T	F	S
				1	2	
3	4	5	6	7	8	9
10	11	12	13	14	15	16
17	18	19	20	21	22	23
24	25	26	27	28	29	30

December

S	M	T	W	T	F	S
1	2	3	4	5	6	7
8	9	10	11	12	13	14
15	16	17	18	19	20	21
22	23	24	25	26	27	28
29	30	31				

HOLIDAYS

Charter Market
Craft, Food & Vintage + Farmers
Craft, Food & Vintage
Sunday Market & Bank Holiday
Mini Markets

1st Jan
29th March
1st April
6th May

New Year's Day
Good Friday Bank Hol
Easter Monday Bank Hol
Early May Bank Hol

27th May
26th Aug
25th Dec
26th Dec

Late May Bank Hol
Summer Bank Hol
Christmas Day
Boxing Day



Ely Fudge Company

HANDCRAFTED



Mother and daughter team, Louise and Jes at Ely Fudge Company, hand make daily creamy, crumbly, English fudge right in front of your very eyes! Using traditional methods, cooking in steel pans and turning on a marble slab, they offer an incredible range of modern and classic flavours as well as beautiful gift wrapping to suit every occasion.

Ely Fudge Company,
31 Market Place, Ely, Cambs CB7 4NT
Tel: 01353 654099
email: info@elyfudge.co.uk
www.elyfudge.co.uk



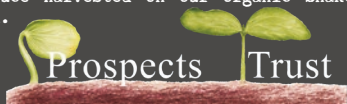
THE PROSPECTS TRUST
UNWRAPPED
RETAILING DIFFERENTLY



SHOP
EAT
REFILL
SUSTAINABLY
SOCIALY
DIFFERENTLY

Mon to Fri 9:30-4:00 Sat 9:00-3:00
UNWRAPPED Lynn Road Ely CB7 4EG

A unique refill shop and cafe providing supported training placements for people with additional needs, serving bakes made in our Enterprise Kitchen and selling seasonal produce harvested on our organic Snakehall Farm.



GARDEN TEAM • SNAKEHALL FARM • UNWRAPPED
www.prospectstrust.org.uk



Camping & Glamping at

Mad Hatters Campsite consists of five acres of wildflower grassy field with a beautiful pond, and over three acres of newly planted trees and hedges.



Campfires!

Perfect for event hire & Mad Hatter themed parties!

Mad Hatters Campsite
Clayway Farm
CB7 4UE, Ely
SatNav Postcode: CB7 4UD

07796 261211

www.madhatterscampsite.co.uk



BAKESHOP - GENERAL STORE



30 ST MARY'S ST. ELY

MON - SAT 8AM - 6PM // SUN 9AM - 3PM

ABOUT US

At the Bake Shop - General Store you can find freshly baked Grain Culture bread and pastries here every morning, with some delicious coffee from local roaster, The Brew Project. We have plenty of seating inside as well as in our lovely walled garden to enjoy a coffee and a pastry with us.

Alongside the great coffee, fresh bread and pastries, we are committed to finding the best and most interesting products out there as we only stock products we would eat ourselves. You can find anything from larder goods and hand-cut farmhouse cheeses from Neal's Yard Dairy, to small batch beers and natural wines to take home with you. You can peruse our selection when you come to collect any bread or pastries, which you can pre-order as well. We love to keep things interesting so we rotate our products often so every time you visit you'll find something different!

Come for the bread and pastries, stay for the coffee, and go home with dinner.

[HTTPS://WWW.BAKESHOPGENERALSTORE.COM](https://www.bakeshopgeneralstore.com)

BREAD • PASTRIES • COFFEE • FARMHOUSE CHEESE • WINES

Tourist Information Centre

A warm welcome awaits you from our friendly and knowledgeable team, based in the historic setting of Oliver Cromwell's House on St Mary's Street.

We can provide a wealth of information whether you plan to stay for the day, a short break or even longer. Our well stocked Centre provides a variety of leaflets and publications for the whole country so we can assist you on your forward journey as well.

Call in and see how we can help you with:

- Local travel information
- Extensive range of leaflets and publications
- Box office service
- What's on guide
- Information on guided groups visits and tours
- Local interest books and maps
- Cycle routes and walks



**To explore the house itself,
find out more by visiting
www.olivercromwellshouse.co.uk/
your-visit/
or call 01353 662062**

Gift Shop

As well as a Tourist Information Centre and visitor attraction, Oliver Cromwell's House is home to its own delightful gift shop stocking a variety of souvenirs, local produce, craft beers as well as unusual gifts.

Function Room

Our 17th Century Tithe Office is a beautiful oak-panelled room which makes the perfect setting for small meetings, gatherings and is ideal as a rest stop for your group. Please enquire for further hire details.

Download the Visit Ely app by clicking on the QR code!

OPENING HOURS

Summer Hours:

1st April to 31st October
10am – 5pm, daily including Saturday,
Sunday and Bank Holidays

Winter Hours:

1st November to 31st March
11am – 4pm daily
Closed: Christmas Day, Boxing Day and New Year's Day



Ely Tourist Information Centre, 29 St Mary's Street, Ely, Cambridgeshire CB7 4HF

Tel: 01353 662062 **E-mail:** info@visitely.org.uk **www.visitely.org.uk**

@visitely /visitely /visit_ely @visitingely

Guided Tours and Walks

Ely's compact city centre allows you to experience a walk through the ages in the company of a City of Ely Tourist Guide or Blue Badge Guide as they lead you around Ely's medieval streets and monastic buildings. Hear the secrets and stories that have shaped Ely's past and present.

A full calendar of walks and tours are available throughout the year. Visit Ely offer everything from winter walks with hot chocolate, to summer riverside strolls! Our season starts warming up around April, so please do check the website for what is available.

All our tours are available as public tours, and private group hire. We also provide a range of pre-booked, costumed guided tours of Oliver Cromwell's House. These are usually arranged by coach travel company, so do enquire.

We can expand any of these tours with visits to other attractions such as Ely Cathedral, the Stained Glass Museum and Ely Museum.

Some of the guided walking tours available:

- Ely and its Riverside
- Ely's Eel Heritage
- Historical City of Ely
- Ely through its Architecture
- Discover Ely's Monastic Buildings
- Evening Ghost Tours (with ghostly sightings guaranteed!)
- Witches and Witchcraft Tours
- Signs and Symbols of Ely
- Ely Inns and Pubs Tour
- Crime and Punishment Tour



Information for group organisers

Our dedicated team can help plan your visit to Ely and the surrounding area and make bookings for attractions, tours, meals etc for you. For this free service, please call 01353 662062 or see www.visitely.org.uk

Coaches are able to drop off/collect at the Gallery (CB7 4DH) and Oliver Cromwell's House (CB7 4HF). Coaches can stay here for 15 minutes only. Free parking is available at the Demcom Stadium, Downham Road, CB6 2SH, a short walk from the City Centre. There are a number of food outlets and toilets available.

For further information refer to our Group Visits page of the website.



Why not check out the 'Ely Experience' by visiting four attractions in one day, bookable with one easy phone call! An easy solution for group travel organisers. Further information is available on our website.



THE TOMB OF THE TEMPLARS

Ely's
Escape
Rooms
Oliver Cromwell's House

An ancient
tomb has been
discovered.
Can you find the
holy relics and
treasure secretly
kept hidden
by the Knights
Templar and their
successors, before
sinister forces do?

A BRAND NEW
ESCAPE ROOM
EXPERIENCE
LAUNCHING
APRIL 2024



For more info: Scan the QR code or call us on 01353 662062



Oliver Cromwell's House

Visitor Attraction

Visit the actual family home of one of
England's most remarkable historical figures

- ✂ Experience 17th Century domestic life in Mrs Cromwell's Kitchen
- ✂ Try dressing-up or playing with the toys of the time
- ✂ Visit the new immersive Civil War Exhibition
- ✂ Cast your vote – was Cromwell a Hero or a Villain?
- ✂ Venture into the Haunted Bedroom if you dare!

Audio handsets bring the story of this impressive award winning house vividly to life. Or try our augmented reality trail – The Cromwell Quest, perfect for families

Guided tours and group visits welcome

Plus Gift Shop, Tourist Information Centre, Function Room and Ely's Escape Room

www.olivercromwellshouse.co.uk

or call 01353 662062

29 St Mary's Street, Ely, Cambs CB7 4HF

✉ @Cromwells_House

📷 visit_ely

📘 /cromwellshouse

📺 @visitingely



Arts & Entertainment

Ely boasts a vibrant arts scene and plays host to an impressive array of events throughout the year, making sure there is something for everyone.

With **Ely Arts Festival**, regular exhibitions at **Babylon Gallery**, a varied programme at **The Maltings** and **Ely Folk Festival**, the Arts scene is incredibly diverse.

The **Cathedral** plays host to a wide variety of concerts and events throughout the year, including both classical and contemporary musicians and performances, exhibitions, and other engaging events. Down on the riverside you'll find two other stellar venues.

The Maltings, a beautiful multi use venue, acts as the destination for the hundreds of visitors who attend the hugely popular Art Shows hosted by **Art Unequalled** twice a year – in June and November, and **Ely's Pagan and Alternatives Fayres** taking place in March, June, September, and November, organised by **Amber Ankh Events**.

In late December, pantomime fever hits Ely and the Maltings is transformed into a palace of family fun and frivolity with the incredible **KD Theatre** bringing much loved professional pantomimes to the city. If that wasn't enough, The Maltings also has their own extensive schedule of musical, theatrical and art events along with hosting **Ely Cinema** too!

Just along the river from **The Maltings** is **Babylon Gallery**, who utilise their incredible riverside space throughout the year to host a range of exhibitions to amaze and enthrall. **Ted Coney**, a huge part of the local arts scene, also opens his home for intimate tours of his remarkable oil paintings; many around the theme of family life and relationships.

KD Theatre also hosts their popular 'KD Academy', helping nurture and develop the artistic skills for young people and providing exciting performance opportunities.

Further afield you'll find **Viva! Arts and Community Group** with their programme of events including theatrical, musical, and cinematic performances for all ages – all hosted within the Viva Theatre, Soham. **Haddenham Arts** also offer an incredible range of activities of an artistic bent, in the picturesque Cambridgeshire town of Haddenham.

To find out about all of these and more, visit:
www.visitely.org.uk

QUALITY **PERFORMING ARTS** TRAINING FOR YOUNG PEOPLE



ACADEMY **ENROLLING NOW!**

Join us at one of our academies
SOHAM (Cambridgeshire) ELY (Cambridgeshire)

FRIDAY EVENINGS 5.00pm - 8.00pm - KD Academy (Ages 6 - 18 yrs)
SATURDAY MORNINGS 9.00am - 10.00am - KD Kidz (Ages 3 - 5 yrs)
10.15am - 1.15pm - KD Academy (ages 6 - 18 yrs)

Book your **FREE taster session today!**

www.kdacademy.co.uk | 01353 725 026 | info@kdacademy.co.uk

ELY³⁸ FOLK FESTIVAL 12-14 JULY 2024

STUNTNEY ESTATE • SOHAM RD • ELY • CB7 5TR

Eddi Reader ★ Peatbog Faeries
Rusty Shackle ★ O'Hooley & Tidow ★ Breabach
Jez Lowe ★ Morganway ★ Rory McLeod ★ Kitewing
John Kirkpatrick ★ Hannah Sanders & Ben Savage ★ Nick Parker
★ Guise ...and lots more. *All artists confirmed subject to contract

MORRIS DISPLAYS, REAL ALE BAR, TRADE STALLS, WORKSHOPS, DANCES, CHILDRENS' ENTERTAINMENT

WEEKEND TICKETS: Tier 1 from £105; Tier 2 from £118; Tier 3 from £124
Concessions available • Children under 12 yrs free • Day Tickets available

Box office: www.elyfolkfestival.co.uk



Why not build your visit to Ely around the wonderful Folk Festival that takes place in July? This small weekend festival with the big heart hosts some of the best folk and roots music acts from across Britain in the beautiful setting of the Stuntney Estate. Headlining acts booked for the 2024 festival include songstress extraordinaire (& ex-Fairground Attraction) Eddi Reader, high octane Peatbog Faeries from the Isle of Skye, young americana band Morganway and vibrant folk rockers Rusty Shackle. This promises to once again be an incredible festival in the heart of the fens.

**"As good a
small festival
as you can
find anywhere
in the country"**
Rock'n'Reel, 2023

If you enjoy live music, street food and locally brewed beer, then Ely Folk Festival is for you. With real ale & gin bars, ceilidhs and workshops, activities for kids, morris dancing, craft and food stalls, there is much to do, listen to and enjoy at this family friendly (and dog-friendly) festival. Tickets are available for the whole weekend or individual days. If you are planning on staying over, you can book a camping pitch with your weekend ticket. Further information can be found by following on @Ely Folk Festival Facebook, and checking the website: www.elyfolkfestival.co.uk



Royal Standard

A great wine list, succulent steak's and finest, fresh seafood are waiting for you...

24 Fore Hill, Ely | Tel: 01353 645194

Seafood Cocktails Steak Great Wines

www.theroyalstandardely.com

What's on

BREAKFAST NOW SERVED

Monday to Friday
7am - 12pm,
Saturday and Sunday
8am - 12pm

WEEKLY SPECIAL

Steak Friday

8oz Sirloin, fries and a
glass of wine £25

DINNER & JAZZ

Live jazz music on the
first Thursday of every
month from 7pm.

Booking essential

THE PRINCE ALBERT

Pub & Restaurant

www.princealbertely.co.uk

Tel: 01353 663 494



NEW *Garden Room*

We have built a beautiful oak beamed garden room, perfect for private hire parties for up to 40 people

Real Ale, Real Cider

9 REAL ALES, 1 REAL CIDER

We have the largest range of real ales in town and a fine selection of wines.

Family Friendly

Children welcome, we do half portions of the adult menu and plenty more.

Opening Hours

Mon - Thurs: 11am - 10pm, Fri - Sat: 11am - 11pm Sun: 12pm - 7pm

Food served Monday to Friday
12pm - 3pm and 5pm - 9pm,
Sat: 12pm - 9pm and Sun: 12pm - 5pm

CITY STUDIOS APARTMENTS 1~3



City Studios, three superbly appointed apartments in the heart of the city centre, ideal for tourists and business use.

Visit our website at

www.citystudiosely.co.uk

call 0777 166 4961 or 07515 883 856



**SUPPLIERS OF NEW,
ANTIQUE AND
BESPOKE FURNITURE**



RESTORATION AND REPAIR

12 CHEQUER LANE, ELY CB7 4LN

01353 659005 / 666772

 @interiorsofely

INTERIORSOFEY.CO.UK

Uclassy

An independent shop, offer lots of beautiful gifts and accessories suitable for many different occasions and for all ages. whether you are looking for a gift, or a treat for yourself, pop in and check us out.



2A High Street Passage, Ely CB7 4NB

<https://www.facebook.com/Uclassy>



A homeware and lifestyle haven, Love Lane by Abi offers a relaxing and calm shopping experience. From elegant table lamps to a new favourite mug, there is something for everyone, all transforming your house into a home.

Unit 2, Ben's Yard, Stuntney, Ely, CB7 5TR

www.lovelanebyabi.co.uk

 @lovelanebyabi

Discover the sights of the East of England

Ely makes for the perfect day visit although you may struggle to do everything you wish in just one day. Why not base yourself here and take time to explore the neighbouring towns and cities that are so accessible thanks to Ely's perfect location within the East of England.

There are traditional seaside resorts to enjoy such as Hunstanton and Sheringham, or maybe take in a beach walk and breathe in the fresh neighbouring Norfolk air at Brancaster, Wells-next-the-Sea, and Blakeney Point. If you enjoy a National Trust property, Norfolk boasts many such as Felbrigg Hall, Blickling Hall and Oxburgh Hall are all worth a visit. A ninety minute drive from Ely will take you through many beautiful villages in Suffolk to the delightful seaside towns of Aldeburgh and Southwold, both famous for their sedate pace – with some wonderful coastline.

On the way you can also visit Snape Maltings and the attractive town of Bury St Edmunds. Ely's Tourist Information Centre is well equipped with brochures, leaflets and plenty of recommendations to plan your day out to our neighbours in Norfolk, so don't forget to check in with us before your journey.





Always accommodating

The increasing popularity of Ely as a base for exploring the East of England has been marked by the growing number of excellent places to stay, both within the city and in the surrounding villages. You can choose from a list of luxury hotels, charming bed and breakfast or self-catering accommodation.

If it's a copper bath you fancy, we have the perfect boutique hotel just for you. Poets House Ely has beautifully designed accommodation, a cocktail bar, private dining and a fabulous restaurant! Location is very much key with this stunning property so do check it out! Just a mile or two out of town, and a real treat, there's The Old Hall, Ely. A wonderful Jacobean manor house awaits at the end of a tree lined drive, with the most exquisite views across the fen towards Ely Cathedral, it really is stunning. Eat, sleep, get married, celebrate with friends – it's a place you really must visit.

Glamp or Camp at the Mad Hatters Campsite or maybe visit Horsley Hale and see the Alpacas. Whatever your preference, you can simply relax or explore at your own pace. Remember that London is just over an hour away by train so you can see the capital's sights without paying London overnight prices.

Maybe an overnight stay on a boat is for you! Nestled on the Great River Ouse, you have Brandon Creek Boat hire. A true magnet for the boating community, here you'll find exciting information about overnight or weekly cruises with information to support your adventure. Back into town you'll find The Lamb, a 15th Century Coaching Inn with plenty of city centre rooms, breakfast, lunch and dinner! Further into Ely, check out the Royal Standard, which boasts beautifully designed ensuite rooms. If self-

contained is what you are looking for, check out City Studios. Choose to eat in, or treat yourself to a meal out. City Studio apartments are literally right in the centre, "a stone's throw" from the market square and boast contemporary style.

A real gem is Gravel Farm, just outside Ely towards Stretham. Gravel Farm comprises of stunningly designed self-catering properties and space where you can host your own 'tailor-made' wedding or special occasion. Tucked away by the River Great Ouse, the cottages boast wonderful views across the fenland countryside together with a huge lake for fishing, boating or just to sit next to and watch the wildlife! If you are just looking for overnight B&B, or a small house to rent for a holiday, check our website for further information, there's so much choice!

A further jewel in the crown is Head Fen Country Retreat with their Lodges and Shepherd's Huts; perfectly appointed away in the Fens. Stay in your own private lodge, complete with jacuzzi and lake views and enjoy some fishing.

Accommodation information is available on our website or Visit Ely's Tourist Information Centre at Oliver Cromwell's House, we would be delighted to help you find a place to stay. Call us 01353 662062.



PIZZA WITH PIZZAZZ

Book your table at the new-look
PizzaExpress Ely today.



43 High Street, Ely, Cambridgeshire, CB7 4LF
pizzaexpress.com

Discover the life and times of Oliver Cromwell, 'Warts and all'



MORE OF OUR COLLECTION ON SHOW NEW INTERACTIVE DISPLAYS FREE ENTRY

Located in his home town of Huntingdon, the Cromwell Museum is home to the world's best collection of items relating to the soldier and statesman Oliver Cromwell (1599-1658).



OPENING TIMES

April – October: Tuesday – Sunday 11 am – 4 pm; Bank Holiday Mondays 11 am – 4 pm

November – March: Tuesday – Sunday 11 am – 3.30 pm

Closed Good Friday, Easter Sunday, Christmas Day, Boxing Day, New Year's Day

ADMISSION IS FREE | cromwellmuseum.org



Ely's Pagan and Alternative Fayres 2024

Over 30 artisan traders, Readers and More

*Spring Pagan and
Alternative Fayre 24th
March 2024*

*Autumn Pagan and
Alternative Fayre 29th
September 2024*



*"Rooted in the
Heart of the
Fens"*

*Summer Pagan and
Alternative Fayre 30th
June 2024*

*Winter Pagan and
Alternative Fayre 25th
November 2024*

www.facebook.com/amberankhevents



cattywampus



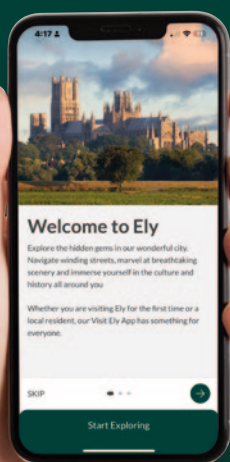
beautifully curated homewares
& hand-selected timeless
women's clothing

Monday to Friday 9.30am - 5pm : Sunday 11am - 4pm

☎ 01353 523850

1 HIGH STREET PASSAGE • ELY • CAMBRIDGESHIRE

Where Medieval meets Modern



Ely, a unique city where medieval charm meets the modern age, unveils its **Visit Ely Mobile App** in 2024. This user-friendly wayfinding app, available on iOS and Android, guides visitors and residents to explore attractions, dining, and shopping.

Complementing the app, giant Wayfaring Signage screens (like a giant version of the app!) are strategically placed throughout the

city, offering easy user-friendly navigation through Ely's medieval paths discovering the secrets that made the city the glorious place it is today.

With over 250,000 visitors per year, from all over the globe, Ely is the districts premier destination management organisation working closely with our partners, Visit East of England, Visit England and Visit Britain. Our aim is to develop the visitor economy strategy both locally, nationally and internationally – so do download the app, and join in those statistics, we would love you to be part of it.

There's also an opportunity to advertise on multiple screens. If you are interested in displaying your event, please contact us via email app@visitely.org.uk or call 01353 662062 and we can discuss our very competitive rates.

**Download the app
by clicking on the
QR code!**

Try the quiz! It's great fun, and a fantastic way to discover hidden historical facts.





The Eel Catcher's Daughter

HIGH STREET : ELY : CAMBRIDGESHIRE

discover new favourites in our beautiful & relaxed shop in the heart of Ely :
gift wrapping & smiles free with every purchase

Monday to Saturday 9.30am – 5pm : Sunday 10.30am – 3.30pm

☎ 01353 668564

shop online : local delivery & UK wide postage

www.eelcatchersdaughter.co.uk



The Meadow House

Outstanding modern house in wooded grounds of two acres. Luxury king sized beds, large car park, generous English breakfasts. Close to Newmarket Racecourses, Cambridge and Ely. Pets accommodated by arrangement. Family rooms available including one family suite of rooms with south facing balcony overlooking gardens. Three large family rooms available.

Mrs Hilary Marsh,

**The Meadow House, 2a High Street,
Burwell, Cambridge CB25 0HB**

T 01638 741926 M 07519 493664

E bookings@themeadowhouse.co.uk

W www.themeadowhouse.co.uk



HILARY'S COTTAGE

A detached Victorian cottage situated in the historic village of Swaffham Prior, close to Cambridge, Newmarket, Ely and The Fens.

Hilary's Cottage maintains much of its old Victorian charm with many original features but with all the benefits of modern facilities. Sleeps up to six with one ground floor room. Charmingly small and secluded garden with patio area and table and chairs for guests use. One Bedroom has ensuite bathroom, two bathrooms. Pets welcome.

Mrs Hilary Marsh, 16 Cage Hill,

Swaffham Prior, Cambridge CB25 0JS

T 01638 741926 M 07519 493664

E bookings@themeadowhouse.co.uk

www.themeadowhouse.co.uk



We have much to celebrate in 2024, and here's a couple of exciting events to whet your appetite. On June 22nd we will be commemorating Armed Forces Day. This will be held on Palace and Cross Green Ely and will be an all-day event.

Armed Forces Day is a national event and a chance to show your support for the men and women, who are part of the Armed Forces community. They could be currently serving troops, to service families, veterans, and cadets. There are so many ways for people, communities, and organisations across the country to show their support, and how to get involved. The City of Ely Council, Visit Ely and the City of Ely Royal British Legion are in collaboration to support this wonderful event.

If you attend Armed Forces Day this year, expect to see a myriad of old vehicles, displays, Armed Forces charities, groups, youth organisations, music, and food. We really hope if you are visiting Ely during that weekend, or you are a resident, you will join us in celebrating our incredible Armed Forces and its community.



On June 6th, 2024, as a nation we commemorate the 80th anniversary of the D-Day landings. To commemorate D-Day, a small service will be held at the war memorial in Ely. Please also join us to remember those who sacrificed their lives.

Further updates will follow to mark the occasion, so please keep posted by checking our website and social media channels.

Lastly, check out our Golden Anniversary Eel Day weekend below, we do hope you will join us in celebrating 50 'official' years of City Status. Whilst Ely has long been known as a city, particularly due to the magnificent cathedral, Ely's city status was officially confirmed in 1974.

On April 1, 1974, HM Queen Elizabeth II granted the letters patent to the civil parish. As the anniversary approaches, we felt it only appropriate to go GOLD, and celebrate. So much has changed over the last 50 years. Ely Museum are hosting a 50th celebration of Ely exhibition, so please do try and participate by visiting www.elymuseum.org.uk/whats-on/our-ely/

50 GOLDEN YEARS OF THE CITY OF ELY!



- Stalls • Singing
- Dancing • Competitions
- Folk music • Real ale
- Re-enactments
- Children's crafts
- Tasty street food
- Crafts • Cocktails
- Food demonstrations
- And so much more!

> For more info go to:
www.visitely.org.uk



Visit Ely
Ely's Tourist Information Centre

Ely

City Centre

Free parking



KEY	
Free Parking	Short Stay
Pay & Display Parking	Long Stay
Tourist Information	Coach Drop off
Eel Trail	Coach Parking
Toilets	
Post Office	
Digital Screens	

N.B. All long stay car parks are subject to early morning restrictions.